

Southern Islands : Pulau Hantu



Native Name : Pulau Hantu

Number of Islands : 2

Access : Jetty, Moor and Swim

Size of Island : 12.6 hectares

Story : "Hantu" is the Malay word for ghost and Pulau Hantu is aptly named as "island of ghosts". It was here that ancient Malay warriors once dueled to the death and their ghosts is said to wander the isle.

Things to do : Pulau Hantu is a favourite with fishing and snorkeling enthusiasts because of its sheltered beaches, swimming lagoons and inviting waters. It is also popular with campers and day-trippers who want a unique outdoor experience away from the hustle and bustle. A wide variety of [hard corals](#) and [soft corals](#) can be found on Hantu; [mushroom corals](#) and enormous soft corals are particularly abundant. Commonly encountered animals include [clown anemonefishes](#), [anemone shrimps](#), [giant clams](#) and a wide variety of [nudibranchs](#). The reefs around Hantu Besar is more extensive than those around Hantu Kecil. There is a small patch of mangroves in between Hantu Kecil and Besar, and native seashore plants line the beaches.

Activities	Description	Available
Beach activities	Including sun bathing, building of sand castle, walks, picnics	Yes
Swimming		Yes
Snorkelling	Beware of strong currents when snorkelling, Besar	Yes
Diving		Yes
Fishing	Available near breakwaters	Yes
Jogging		Yes
Bird Watching		Yes
Marine Life		Yes
Trekking		Yes
Wildlife Viewing		Limited
BBQ	Need booking, call xxxxx	Yes
Dogs	Long beaches with white sands	Yes

Getting There

Directions:

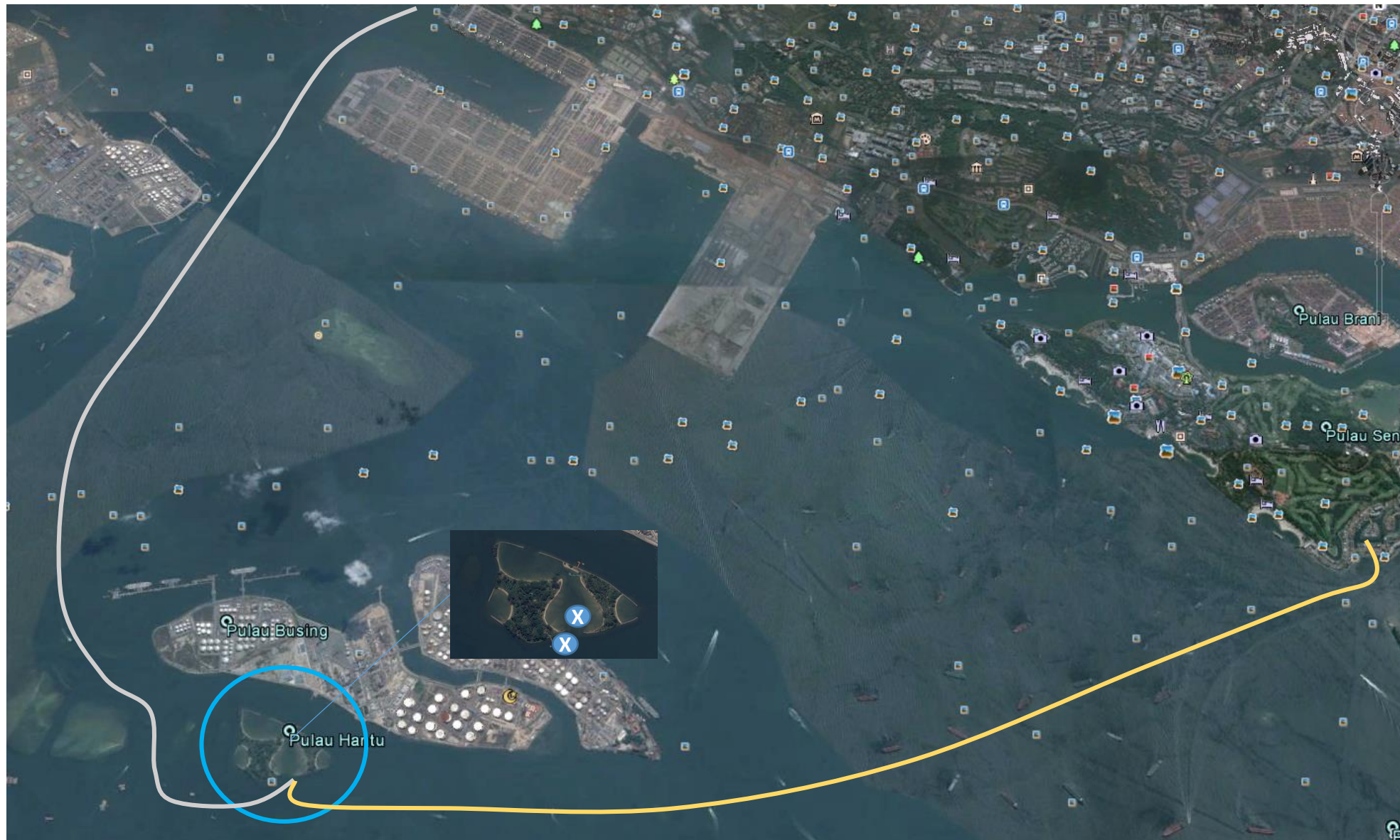
Depart from One Degree 15 Marina (est 25 mins)

Depart from RSYC Marina (est 25 mins)

Berthing/Landing : Can berth in the lagoon or at the Jetty at Hantu Besar

Note :

1. Enter the bay/cove only during mid to high tides. During low tides, there is possibility of beaching as the depth is about 1-1.5M
2. Do not attempt to enter the bay during low tides
3. You can use the jetty at Besar and not Kechil. Kechil jetty is for big boats
4. Do not leave your boat at the jetty as there is limited space²



Map/Amenities



Legend

- T** Toilets
- C** Cove/Beach
- J** Jetty
- A** Accessible Jetty
- B** BBQ
- S** Shelters
- F** Fishing Spots
- K** Snorkelling
- X** Mooring/Drop Anchor
- M** Marine Walk

- D** Danger Spots:
 - Rocks
 - Shallow grounds
 - Strong currents

TBSA's Take On The Island

This is an island which allows for almost anything. You have great walking trails, beautiful beaches, coral colonies around the island, fishing spots, toilets, bbq pits, a berthable jetty etc. There are also lots of coconuts on the island for you to pick and drink. We think that this island has great potential. This island is also opposite Semakau which has quite a few fishing spots and kelp forests. We also found clown fish and oysters in the waters around the island. Waters around the island are generally calm (with occasional currents) so you can run your boat fast and still have a smooth ride.

There are however a few areas you need to take note of :

1. Strong currents around the island, need to watch out for swimmers especially the weaker ones
2. Low tides. The entrance of the lagoon can be <1M at low tides so you will not be able to enter. The lagoon is also very shallow during low tides and your boat will get beached. Read the tide tables before attempting to anchor in the lagoon
3. This island is in between RSYC and One 15. It will take about 30 mins to either Marina. Leave early to avoid driving after nightfall.
4. Wear shoes in the lagoon, there are corals that can cut your feet.

Here's a link to our adventures on the island : <http://youtu.be/Evc4FUKLTkw>

Excerpts:

1. Story and Things To Do : taken from WildSingapore : <http://www.wildsingapore.com/places/hantu.htm>
2. Maps : Google Earth

Here's a video of the island:

